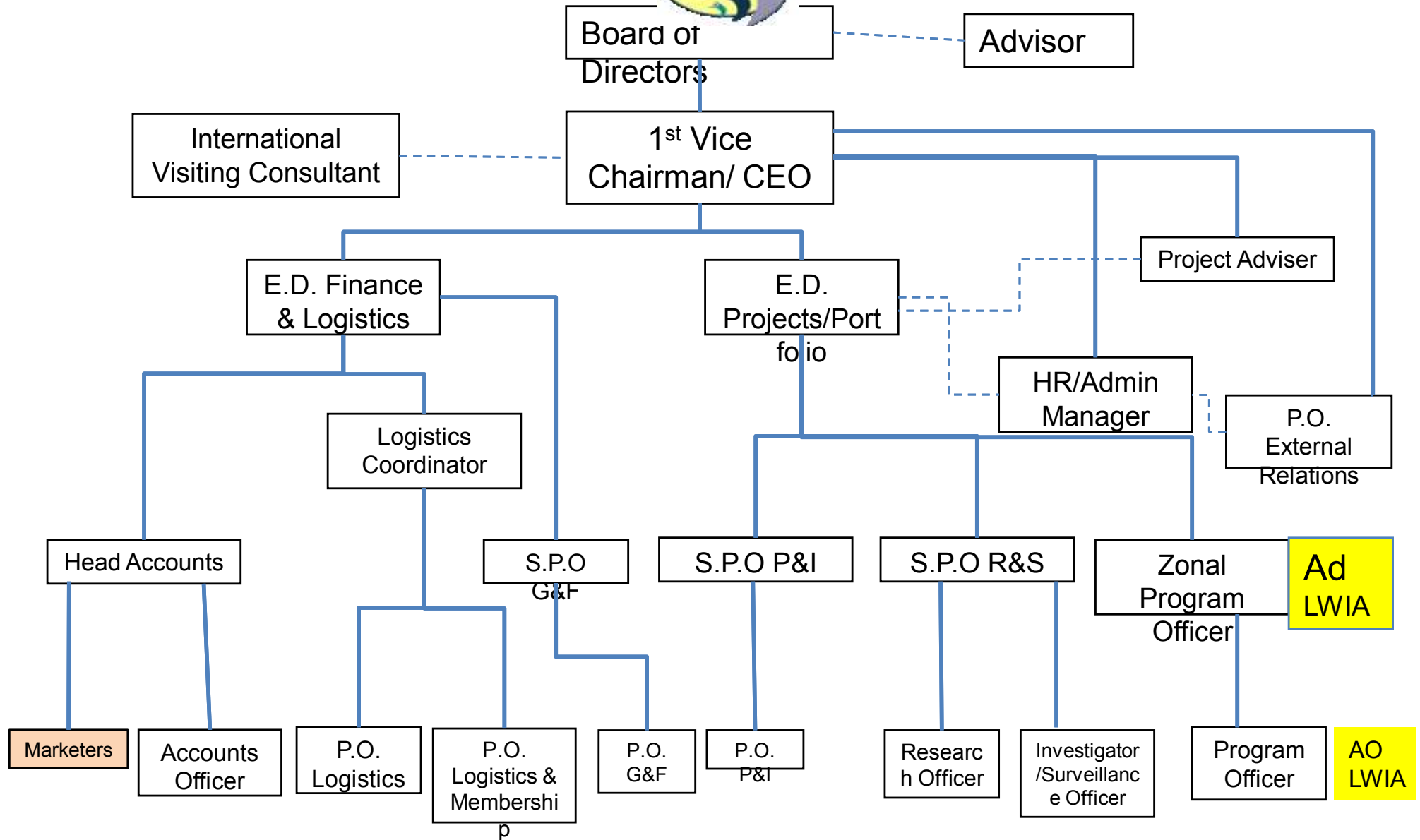




LIVEWELL INITIATIVE PROGRAMMES & PICTURES FOR THE YEAR 2011



KEY:

E.D. – Executive Director

P&I – Planning & Implementation

S.P.O - Senior Programme Officer

HR – Human Resources

P.O. - Programme Officer

AdLWIA – Administrator LWI Academy

G&F – Grants & Funding

R&S – Research & Surveillance

AOLWIA – Academy Officer



Year 2011 – A Summary of Great Successes

- Year 2011 was a year of great successes for LWI
- Every quarter of the year we ran various targeted programmes and desired results were attained, sometimes exceeding set targets
- LWI set ambitious goals, running several concurrent programmes throughout the year – Executive Health Programmes, Community Health Programmes, Training Programmes, Health Fairs, and Innovative Programmes
- LWI was able to publish its 3-year audited accounts



YEAR 2011 PROGRAMMES

Q1

EHES - EXECUTIVE HEALTH ENLIGHTENMENT SCHEME

- **Guaranty Trust Bank Town Planning Way Ilupeju 20th January, 2011**
- **Crystalife Assurance Orchid Hotel Lekki 25th January, 2011**
- **Mutual Benefits Life Assurance No. 21/24 Town Planning Way Ilupeju 19th March, 2011**
- **Nikky Taurus Mary Land 12th March, 2011**
- **NACC - Nigeria Association of Chamber of Commerce No. 15 Kofo Abayomi V/I, Lagos 24th March, 2011**
- **NIA - Nigeria Insurance Association No. 42 Saka Tinubu V/I 29th March, 2011**



Q1 CONTD

LWI ACADEMY LWIA

- **LSHMC – Lagos State Govt Training on A new Insight into Rational Drug Management LIMH Conference Room 28th January-31st January and February 4th, 2011**
- **LWI-APhA Immunization Training Programme Protea Hotel Ikeja 26th February, 2011**

SPECIAL PROJECT

- **LWI GHB2011 Grand HealthBazaar Programme 9TH- 11TH March, 2011**



Q1

Crystalife Assurance at Orchid Hotel Lekki 25th January,

Solomon giving a Health talk



01 Registration point





LWI EHES PROG At Mutual Benefits Life Assurance 19th March, 2011

**S.B Ope dispensing to the CEO of
Mutual Benefits Assurance**

**CEO LWI giving a Health Talk to
the staff of Mutual Benefits**





LWI Immunization training programme Protea Hotel Ikeja 26th February, 2011

**Professor Gary Smith (AZ,USA)
lecturing on Immunization**



CEO LWI Lecturing





LWI/LSHMC Training on A new Insight into Rational Drug Management LIMH Conference Room 28th January, 31st January and February 4th, 2011

CEO LWI Training the staff of LSHMC On Rational Drug Use





LWI EHES Prog at Nikky Taurus 12th March, 2011

**S.B Ope and Seun Oyemade
dispensing**



LWI Officers measuring BP





Nigeria American of Chamber of Commerce (NACC) No. 15 Kofo Abayomi V/I, Lagos 24th March, 2011

LWI Presenting to the Audience



Nurse Osadebe measuring BP





Nigeria Insurers' Association (NIA) No. 42 Saka Tinubu V/I 29th March, 2011

S.B Ope counselling

Tobi measuring BP



SPECIAL PROJECT

11 Grand Health Bazaar Programme 9TH- 11TH March, 2011



THE INCUBATOR,

VICTORIA ISLAND, LAGOS.

Tina Onufer , PAS , US Consulate General, and her Team take a tour round the LWI GHB Exhibition Stand s





Q2

INTERNSHIP PROGRAMME

- **BABCOCK STUDENT'S INTERNSHIP**

EXECUTIVE HEALTH EMPOWERMENT SCHEME - EHES

- **LWI EHES Prog at *Sola Oyetayo & Co.* Ikeja 4th April, 2011**
- **EHES Prog at *City of David* Oniru Palace, V/I 22nd May, 2011**
- **LWI EHES Prog at *Lagos State Govt. Accountants' Retreat.* 19th 20th May, 2011**
- **LWI EHES Prog at *FBA First Business Alliance* No. 12 Aiico Plaza Afribank Street, V/I.**



Q2

LWI ACADEMY LWIA

- **LWI/Mega Care** Crash training Prog. At Elion House Hotel Ikoyi 7th – 9th June, 2011
- **LWI/Mega Care** A & E training Prog. At Elion House Hotel Ikoyi 10th June, 2011
- **LWI/Mega Care** Immunization training Prog. At Elion House Hotel Ikoyi 13th – 14th June, 2011
- **LWI A & E Training** Prog At Protea Hotel Ikeja 15th June, 2011
- **LWI Immunization Training** progr. At Protea Hotel Ikeja 16th – 17 June, 2011



Q2

DUADES - DRUG USE ABUSE AND DISUSE ENLIGHTENMENT SCHEME

- LWI DUADES Prog at **Golden Bunch Primary School Alagomeji Yaba, 26th May, 2011**

IPAP - IINESS POVERTY ALLIVIATION PROGRAMME

- LWI IPAP Prog at **Motherless Babies Yaba 30th April, 2011**
- LWI EHES Prog at **Children's Hospital Babies' Fair Festac town 25th April, 2011**
- IPAP Prog at **Vulcanizer Somolu Association 12th April, 2011**
- Chapel of Healing Cross Fellowship **Picnic Lagoon Front Unilag 21st May, 2011**
- LWI IPAP Prog at **Sura Market Lagos Island 5th May, 2011**



Q2

LWI EHES Prog at Sola Oyetayo & CO. Ikeja 4th April, 2011

Bisola registering the participant



S.B Ope counseling





LWI EHES Prog at Lagos State Govt. Accountants' Retreat. 19th20th May, 2011

Damola attending to clients



**CEO of LWI Counseling after BP
check**





LWI EHES Prog at **FBA** No. 12 Aiico Plaza Afribank Street, V/I.

...The Health talk



Dr. Shittu consulting





LWI EHES Prog at Karrington Ifako, 11th June, 2011

Bolajoko giving a Health talk



Mike checking Sugar levels





WES Prog at Entry Level **GTB Plc** Bank Anthony Way, Ikeja 30th June, 2011

Andrew measuring BMI



S.B Ope counseling





Mega Care Crash training Prog. At Elion House Hotel Ikoyi 7th – 9th June, 2011

Mrs Yejide Wyse - Facilitator

**Mr Funto Akinkugbe Lecturing
Participants**





MI/Mega Care A & E training Prog. At Elion House Hotel Ikoyi 10th June, 2011

**First Aid /CPR Instructor Ugwu
demonstrating practicals for the
trainee s**

**Nurse Nkiruka teaching the
practical s**





LWI DUADES Prog at Golden Bunch Primary School Alagomeji Yaba, 26th May, 2011

Bolajoko teaching pupils on Drugs Abuse - DUADES





LWI IPAP Prog at Motherless Babies Yaba 30th April, 2011

LWI-Stanbic IBTC Fellowship collaboration





IPAP Prog at **Vulcanizers' Somolu Association** 12th April, 2011

S.B Ope giving a health talk



Demilade calculating BMI





LWI IPAP Prog at **Sura Market** Lagos Island 5th May, 2011

S.B Ope giving a Health talk



Seun Counseling a Patient





Q3

EXECUTIVE HEALTH EMPOWERMENT SCHEME

- **LWI EHES Prog at PZ Entry Level Town Planning Way Ilupeju 11th July, 2011**
- **EHES Prog at GTB Entry level Town Planning Way Ilupeju 8th August, 2011**
- **EHES Prog at GTB Entry level Town Planning Way Ilupeju 19th Sept, 2011**
- **PMGMAN EXPO FAIR Federal Palace Hotel V/I 19th – 21st Sept, 2011**
- **World Health day In collaboration with Mega-Care Pharmacy Awolowo Rd. Ikoyi September 29, 2011**



Q3

LWI ACADEMY LWIA

- **LWI Summer Training** prog at Marc Polo Restaurant V/I 22nd – 24th June, 2011
- **LWI First Aid / CPR Training** at **British Gas** No. 15^A Temple Street, Ikoyi. 28th July, 2011
- **LWI Accident & Emergency training Program** **Elion Staff**, at Elion House Hotel, Ikoyi 25th Sept, 2011

ILLNESS POVERTY ALLEVIATION PROGRAMME (IPAP)

- **LWI IPAP Prog.** at **Abesan Market** Iyana Ipaja 4th August, 2011
- **LWI IPAP Prog** at **Westex Mechanic Park** Gbagada 9th August, 2011



THIRD QUARTER

LWI EHES Prog at **PZ Entry Level** Town Planning Way Ilupeju
11th July, 2011

Bolajoko giving a Health talk



CEO LWI COUNSELING





EHES Prog at **GTB Plc Entry level Town** Planning Way Ilupeju 8th August, 2011

S.B Ope counseling



Seun giving a Health talk





LWI First Aid /CPR Training at British Gas No. 15^Ath Temple Street, Ikoyi. 28th July, 2011

Participants are practicing what they have learnt

Nurse Nkiru lecturing





LWI IPAP Prog at **Abesan Market Iyana Ipaja 4th** **August, 2011**

Seun and S.B Ope dispensing/counseling





LWI IPAP Prog at **Westex Mechanic Park Gbagada 9th** **August, 2011**

Babcock Internees are counseling /BP taking





Q4

EHES - EXECUTIVE HEALTH EMPOWERMENT SCHEME

- EHES Prog at **GTB Plc** Entry level Town Planning Way Ilupeju 13th October, 2011
- LWI EHES Prog at **FSDH UAC** Building Marina, Lagos. Nov. 3rd, 2011.
- LWI EHES Prog at Entry Level GTB Ilupeju town planning way 6th December, 2011
- LWI EHES Programme at **Vigeo Holdings** Osborne Rd, Ikoyi 9th December, 2011
- LWI EHES Programme **Muson Centre** Lagos Island 10th December, 2011



Q4

BUSINESS POVERTY ALLIVIATION PROGRAMME (IPAP)

- LWI IPAP Prog in collaboration with **Soropstimists International** at Onigbongbo Mkt Maryland, Lagos. October 20TH 2011
- LWI MEP Prog in collaboration with **Golden Bunch School Moleye Street, Yaba** Lagos Nov. 12th, 2011
- LWI IPAP Prog at **Mechanic Park Ilupeju** branch Nov. 25th, 2011
- LWI **MEP Programme** at Idi-Araba Chapel of Healing Cross Idi-Araba 10th December, 2011
- LWI IPAP Prog in collaboration with **GSK Orange Day** at **Motherless Babies Onireke Community, Ibadan** Dec 15th



Q4 CONTD

LWI ACADEMY LWIA

- **LWI Nutritional Health Training Programme In collaboration with UTC Plc 7th December, 2011**

SPECIAL PROJECT

- **LWI Annual Health Fair at Rowe Park Yaba October 13th – 14th, 2011**

SPECIAL PROGRAMME

- **World Diabetes Day In collaboration with Mega-Care Pharmacy Awolowo Rd. Ikoyi November 14, 2011**
- **World AIDS Day In collaboration with Mega-Care Awolowo Rd. Ikoyi Dec. 1st, 2011**



Q4 CONTD

- **LWI/SILVERBIRD GROUP ANNUAL CHRISTMAS HEALTH FAIR - Silverbird Galleria, Victoria island, Lagos. December 21st, 2011**



LWI Annual Health Fair at Rowe Park Yaba October 13th – 14th, 2011

**Group Photo with the Director,
Family Health; Fed Ministry of
Health Abuja, Dr P Momah & Team**

Drugs Stand at the fair





LWI EHES Prog at **FSDH** UAC Building Marina, Lagos. Nov. 3rd, 2011.

Mike checking Sugar levels



Rapt attention to the Health talk





LWI EHES Prog at Entry Level GTB Ilupeju town planning way 6th December, 2011

Dr. Adewakun giving the Health talk



LWI Officer counseling





VI EHES Programme at Vigeo Holdings Osborne Rd, Ikoyi 9th December, 2011

BMI measurement



...Counseling...





LWI EHES Programme **Muson Centre** Lagos Island 10th December, 2011

Dapo measuring BP



....Health talk





LWI IPAP Prog in collaboration with Soropstimist at Onigbongbo Mkt Maryland, Lagos. October 20TH 2011

LWI at Onigbongbo Market





**LWI MEP Prog in collaboration with Golden Bunch School
Moleye Street, Yaba Lagos Nov. 12th, 2011**

S.B Ope dispensing



Uche measuring BP





LWI IPAP Prog at **Mechanic Park Ilupeju** branch Nov. 25th, 2011

LWI At Mechanic Park Ilupeju branch





LWI Nutrition training Programme In collaboration with UTC Plc 7th December, 2011

LWI Officers Uche/Niyi Presenting Certificates to UTC Trainees





**LWI IPAP Prog in collaboration with GSK at Motherless
Dabies Onireke Community, Ibadan December 15th, 2011**

GSK ORANGE DAY

**LWI Officer Uche teaching the
children HandWashing**



**GSK MD, Mr Lekan Asuni/ and
Head,HR Lara doing their
HandWashing with the kids**





Thank You

*We wish you a fruitful and successful
year 2012 ahead*