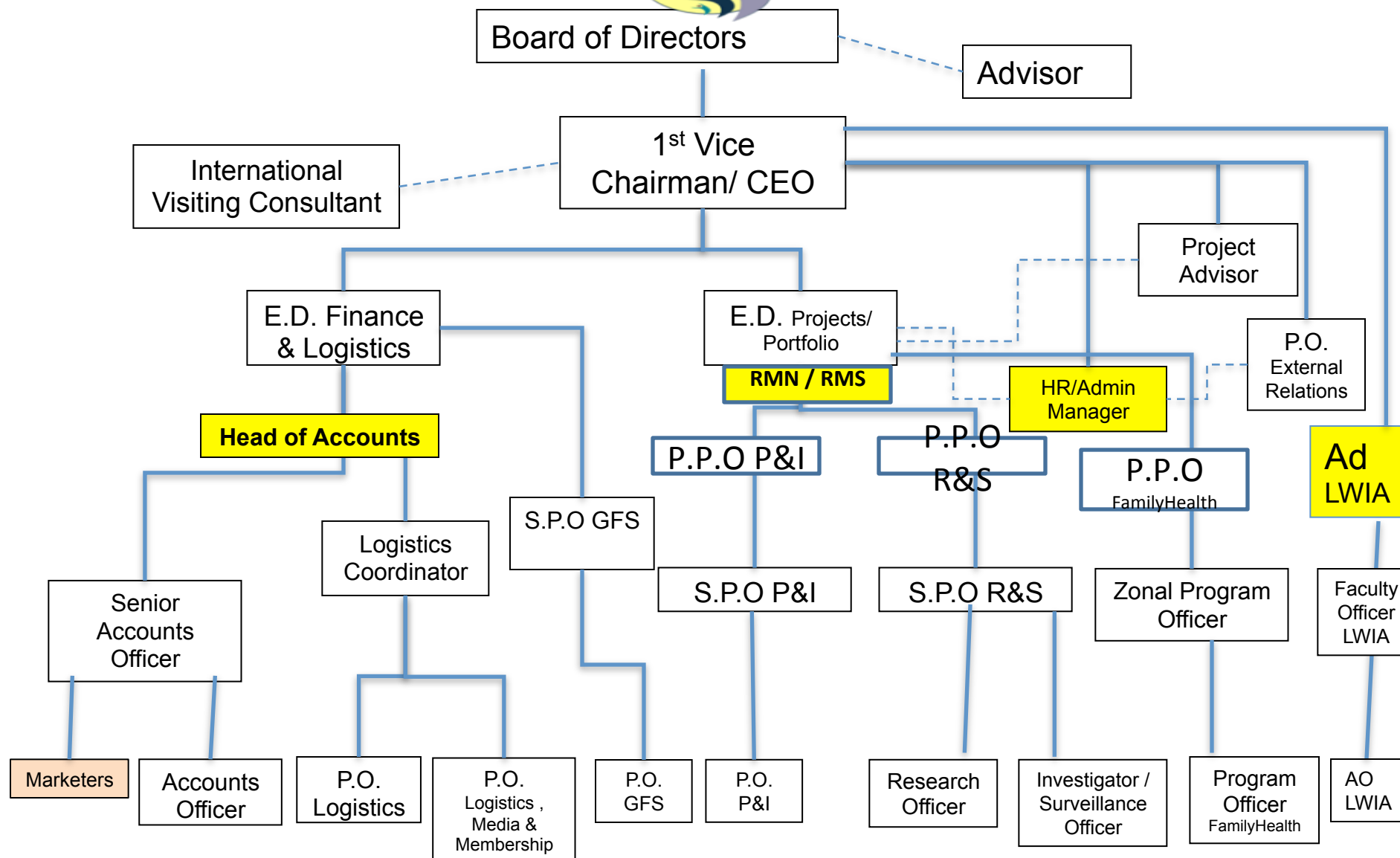




LIVEWELL INITIATIVE LWI OVERVIEW OF PROGRAMMES FOR THE YEAR 2013

LiveWell Initiative Organogram



KEY:
E.D. – Executive Director
P&I – Planning & Implementation
S.P.O - Senior Programme Officer
P.P.O – Principal Programme Officer
HR – Human Resources
P.O. - Programme Officer
Ad LWIA – Administrator LWI Academy
RMN – Regional Manager North
GFS – Grants, Funding & Strategy
R&S – Research & Surveillance
AO LWIA – Academy Officer
RMS – Regional Manager South



YEAR 2013 PROGRAMMES

Q1

EHES - EXECUTIVE HEALTH ENLIGHTENMENT SCHEME

- Workplace Wellness programmes for GTBank entry level trainees at Ilupeju
- 20th January, 2013
- 25th January, 2013
- 22nd February, 2013
- 7th March, 2013

EASYHEALTH

ECONOMIST CONFERENCES - Capetown, South Africa

IPAP



Q1 'EASYHEALTH'



**Home Healthcare by
LWI Team**

Q1

Workplace Wellness programmes for GTBank entry level

Dr. Adewakun Lecturing



LWi Officer measuring BMI



Workplace Wellness programmes for GTBank entry level – FEB. 2013



LWI Officer Counselling



B.P Screening





Q2

SPECIAL PROJECT

- **LWI Grand Health Bazaar GHB2013 April 17TH- 19TH March, 2013**

LWI ACADEMY

- **BABCOCK STUDENT'S INTERNSHIP (PUBLIC HEALTH)**
- **UNILAG STUDENTS INDUSTRIAL ATTACHMENT (SIWES) (PHARMACY)**
- **Leadership Training for UNILAG students April 3rd**

EXECUTIVE HEALTH EMPOWERMENT SCHEME - EHES

- **Workplace Wellness at GTBank Head Office at Akin Adesola Street Victoria Island April 30th**
- **Cancer Awareness Programme at FSDH Merchant Bank 13th June**
- **Nutrition and Wellness Programme for drivers at Nikky Taurus April 20th**



Q2

DUADES - DRUG USE ABUSE AND DISUSE ENLIGHTENMENT SCHEME FOR ADOLESCENTS

- Mother/Child Health Fair at **Golden Bunch Primary School Okota** 27th May 2013
- World Sanitation Day Program at **Corona School Agbara** June 15th
- Programme at **Childlifeline Foundation Ifako Gbagada** April 3rd, May 1st and June 5th
- Programme at **Broadway Schools Surulere**

SPECIAL PROGRAMME

- **LWI/ Mass Communication Students Association (MSA)** “Walk against Domestic Violence” at **UNILAG** June 25th
- Leadership Training for the Students at **UNILAG** May 22nd

EASYHEALTH

- April 4th, May 2nd and June 6th



Q2

LWI EHES Prog for Drivers and Transporters April, 2013

Dr. Adewakun Lecturing



**Drivers queuing up at
Registration Point**





LWI GHB2013 Grand Health Bazaar Programme 17TH – 19TH April , 2013

Energy Group at GHB2013



CEO of LWI with group of Oando



GHB2013 – Over 120 Companies, Over 2500 Delegates, Over 20 CEOs

UNITED AIRLINES AT GHB2013



**OXFORD BUSINESS GROUP,
MOBITEL at GHB2013**



Health Sector Power Brokers – Lagos State, Mozambique Govt at **GHB2013**



GSK Sensodyne at GHB2013



Skype Bank Plc presents O-Gas Cylinder to WOCAN President at GHB2013



CEO Sahara Aviation, Osun State Hon Commissioner for Health at **GHB2013**





BABCOCK STUDENT'S INTERNSHIP (PUBLIC HEALTH)

Babcock Interns Group Photo



Babcock Interns at a Programme





Leadership Training for **UNILAG** students March 2013

Dr. Abraham delivering a lecture



**Question and Answer Session
With CEO, LWI**





MATERNAL AND CHILD HEALTH PROGRAMME at Golden Bunch Primary School Okota CHILDREN'S DAY MAY 27TH 2013

**Nnedimma Obi demonstrating
Handwashing techniques**



Malaria Screening Stand





World Environmental Day Programme at Corona School Agbara LWI embarks on Tree-Planting and Health Screening

Dr. Ajisafe counselling a patient



LWI Officers screening for Sugar Level





LWI/Mega Care **FIRST AID / CPR** Training Programme at Elion House Hotel Ikoyi 10th June, 2011

First Aid /CPR Instructor Mrs Ugwu demonstrating CPR



Nurse Nkiruka teaching how bandage a head injury





Programme at Broadway International Schools Surulere June 15th 2013

Mrs Nneka Isiadinso delivering a lecture



Babcock Interns conducting BP screenings





Leadership training for the students at The Bells University Ota May 22nd

Group Picture with Interns and LWI Officers





Q3

EXECUTIVE HEALTH EMPOWERMENT SCHEME

- (“Jogging to Bond”) for **UBA Bank** Staffers at YABATECH Sports Centre August 14th“
- “Healthy Living and Stress Management” **Union Bank PLC** Headquarters at Marina Lagos 28th Sept
- Workplace Wellness programme for **GTBank** Entry Level Trainees at Ilupeju Sept 5th,
- Cancer Awareness Programme at **FSDH Merchant Bank** Sept 26th



Q3

SPECIAL PROGRAMMES

- **“World Hepatitis Day”** Commemoration at the Redeemed Christian Church of God Potters Parish Ikeja July 28th

LWI ACADEMY LWIA

- **Cervical Cancer Screening Trainings for LWI Officers**
26th July
- **Training 23rd -27th September** Matrax/ **Nigeria Ports Authority (NPA)** Deluxe Health
- **BABCOCK STUDENT’S INTERNSHIP (PUBLIC HEALTH)**
- **UNILAG STUDENTS INDUSTRIAL ATTACHMENT (SIWES)**
(PHARMACY)



Q3

DUADES - DRUG USE ABUSE AND DISUSE ENLIGHTENMENT SCHEME FOR ADOLESCENTS

- Programme at Crown and Coronette School Gbagada 18th July
- Programme at **Childlifeline Foundation Ifako Gbagada** July 3rd, August 7th and September 11th

EASYHEALTH

July 4th, August 1st and Sep 5th



THIRD QUARTER

“Jogging to Bond” for **UBA** Staffers
at YABATECH Sports Centre August 14th“

LWI Team in Action at the

CEO Lecturing at the Programme Programme



Workplace wellness programme for GTBank Entry Level Trainees at Ilupeju Sept 5th



Miss Nnedimma Obi Lecturing on the effects of an unhealthy lifestyle

Pharm. Uloma Dispensing





Cancer Awareness Programme at FSDH Merchant Bank

PROSTATE CANCER PREVENTION & EARLY DETECTION

Sept 26th

Lecturing hour with Dr. Adekola



Cardiovascular Screening Point





Nigeria Ports Authority (NPA) LWI 'Deluxe Health Package' ... *Best Western Hotel, VI Lagos Sept 26th-28th*





BABCOCK STUDENT'S INTERNSHIP (PUBLIC HEALTH)

Babcock University Internees Presenting (Operations Office) and Counseling at a Programme (Community Health)





Q4

COMMUNITY HEALTH FAIRS

- **LWI/Regency Alliance Insurance (Ogun State Rural Health Mission)** in Imeko, Ipokia and Ilaro October 7th – 8th
- **LWI/IAPO Patient Solidarity Day PSD2013 Health Fair** in Ilesha Osun State 31st October (**International Health Mission**)

COMMUNITY HEALTH PROGRAMMES

- **LWI/Soroptisimts International** (Lagos Mainland Chapter) Programme at **Awolowo Market Mushin** 3rd October
- Programme at **Olorunshogo ultramodern market Oshodi** 11th December



Q4 CONTD

LWI ACADEMY LWIA

- Cervical Cancer Screening Trainings Nov 26th

EXECUTIVE HEALTH EMPOWERMENT SCHEME

- **Healthy Living and Stress Management” Union Bank PLC Oba Akran Branch Lagos Nov 16th**
- **Workplace wellness, Nutrition programme for staffers of GTConnect Opebi Lagos 19th and 26th of October and 2nd of November**
- **Healthy Living and Stress Management” Union Bank PLC Headquarters at Marina Lagos Nov 9th**
- **Workplace Wellness programme for GTBank Entry Level Trainees at Ilupeju Nov 15th**



Q4 CONTD

EXECUTIVE HEALTH EMPOWERMENT SCHEME

- Cancer Awareness Programme at **FSDH Merchant Bank** Sept 26th
- Mental Health programme at **Banwo & Ighodalo** (law firm) at Ikoyi Oct 11th

SPECIAL PROGRAMMES

- Prostate and Cervical Cancer screening for **Airtel Nigeria** Staffers at **Airtel Nigeria** Headquarters at Banana Island Ikoyi Oct 26th and Nov 1st
- **LWI/SILVERBIRD GROUP ANNUAL CHRISTMAS HEALTH FAIR** - Silverbird Galleria, Victoria island, Lagos. December 19th, 2013



IPOKIA AND IMEKO RURAL HEALTH PROGRAMME (Sept 2013)



IPOKIA HEALTH MISSION TEAM...



IPOKIA (Ogun State Rural Health Mission, September 2013)





LWi
LiveWell Initiative

LWI/IAPO Patient Solidarity Day PSD2013 Health Fair in Ilesha Osun State 31st October





LWi
LiveWell Initiative

LWI/Soroptimists Int'l Programme

Awolowo Market Mushin 3rd October





‘Healthy Living and Stress Management’

Union Bank PLC Oba Akran Branch Lagos Nov 16th





Workplace wellness, Nutrition programme for staffers of **GTConnect Opebi** Lagos 19th and 26th of October and 2nd of November





LWI

Programme at Olorunshogo Ultramodern market Oshodi 11th December



DEWORMING CHILDREN – Osun State Rural Health Mission (Oct 2013)



Internships at LWI - Teamwork



Interns' Presentation Time...at LWI Operational Office, Gbagada Lagos



LWI Head Office convenes Strategic Health Sector Focus Group Meeting SFGM - **Hon Permsec Health Lagos, Dr Mona of Fox News Chicago, Shell SPDC , USAID, DFID** Participate actively (July 31st 2013, Oniru Rd, Victoria Island Lagos)



LWI SFGM

(July 31st 2013, Oniru Rd,
Victoria Island Lagos)

Welcome Remarks by CEO LWI,
Bisi Bright

L-R CMD LUTH Prof Akin Osibogun,
Chairman/Permsec Health Lagos
State, Dr Femi Olugbile, Co-
Chairman/Associate Professor /Fox
News Chicago Contributor, Dr Mona
Khanna; CEO LWI Bisi Bright,
Advisor LWIA Bukky Ayoade, NSM
May & Baker Mr John Edheku



NSACC Nigeria South African Chamber of Commerce at

LWI Operations Office Gbagada, August 2013



International Award-Winning Photo

PSD2013 – IAPO: LWI WINS PHOTO CONTEST Oct 2013





Thank You All... ***Merry Christmas!***